



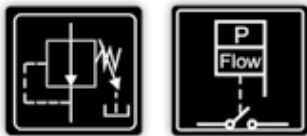
# EPR

Electronic Pressure Regulator

Pump driver with adjustable outlet pressure. Constant pressure.

**EPR** is a compact device for automatic control and protection of electric pumps up to 2,2 kW (3 HP), multi-voltage (110-230 V) and equipped with an innovative outlet pressure reducing/regulating system.

Therefore, in addition to the typical characteristics of traditional electronic pump controllers: integrated non-return valve, accumulation diaphragm, pressure gauge, dry-running protection, automatic reset, ... it allows to adjust and stabilize the outlet pressure, avoiding overloads, water hammer and, ultimately, improving end user comfort.



**EPR**

## OPERATING CHARACTERISTICS

- Power relay to manage electric pumps up to 2,2 kW (3 HP).
- Multi-voltage power supply: 110-230 V.
- Manual regulation of the constant outlet pressure with integrated adjusting tool.
- Outlet pressure indicator with pointer.
- Auto-setting of the start pressure linked to the outlet pressure.
- Dual scale integrated pressure gauge (bar/psi).
- Integrated protection system which stops the pump in case of dry-running operation.
- **APR** function (Anti-blocking periodic routine). After 3 days of inactivity, the device starts the pump for 10 seconds in order to avoid rotor-locking.
- **ART** function (Automatic Reset Test). If the device has been stopped due to the action of the safety system against dry run operation, this function tries to connect the pump, with a programmed periodicity, because the water supply could have been restored.
- Control panel:
  - Yellow led light (POWER).
  - Green led light (PUMP ON).
  - Red led light (ALARM).
  - Green led light (FLOW)
  - Tactile push button for manual start.
- Integrated reserve against leaks in the installation and non-return valve.
- Inlet and outlet hydraulic threads: G1", G1-1/4", NPT1", NPT1-1/4".



**REGISTERED  
DESIGN**



Low Voltage Directive 2014/35/EC  
Electromagnetic Compatibility 2014/30/EC  
RoHS 2011/65/EC + 2015/863/EC



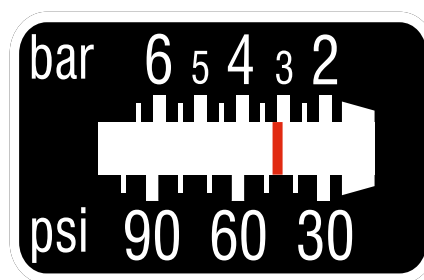
## TECHNICAL CHARACTERISTICS

	<i><b>EPR</b></i>
Power supply	1~ 110-230 Vac (50/60 Hz)
Max. current intensity	16 A; cos fi ≥ 0,6
Power	2,2 kW (3 HP)
Outlet pressure range (P <sub>out</sub> )	2 ÷ 6 bar / 29 ÷ 87 psi
Start pressure range	1 ÷ 5 bar / 14,5- 72,5 psi
Protection degree	IP65
Max. temperature	50 °C
Max. pressure	10 bar / 145 psi
Inlet and outlet thread	G1", G1-1/4", NPT1", NPT1-1/4"
Net weight (without cables)	2 Kg

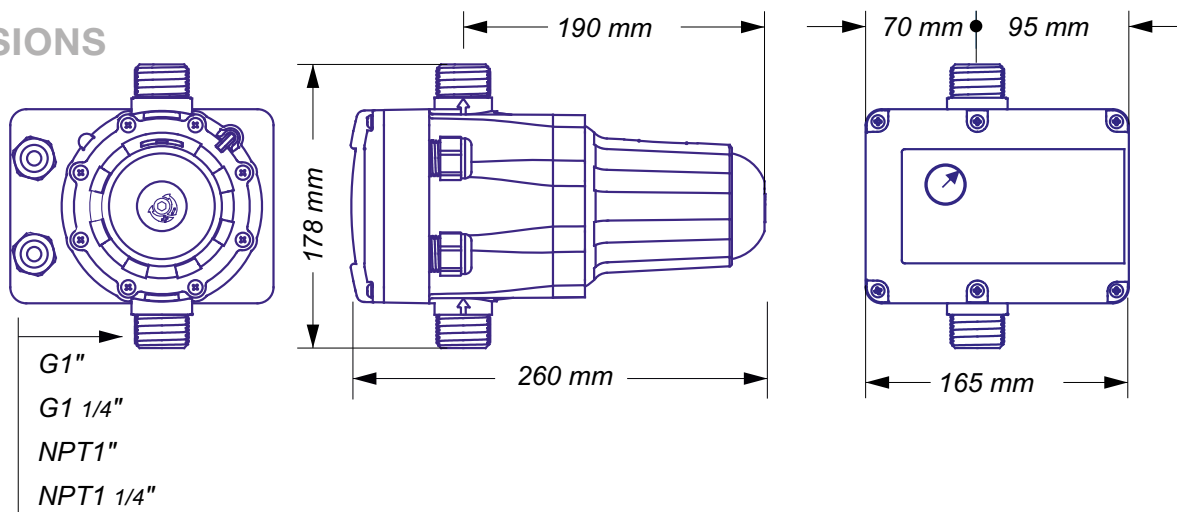
## CONTROL PANEL



## OUTLET PRESSURE INDICATOR



## DIMENSIONS





**Gol Pumps Technology Company**  
*Supply, Import, Export Water Pumps*

---

**Gol Pumps Technology**

[www.golpumps.com](http://www.golpumps.com)

**Our Address:** 6520 NW 77th CT, Miami FL 33166, USA

**Sales DPT:** +1 786 615 8984

**After Sales Service:** +1 786 452 9775

**Fax:** +1 786 615 7043

**Email:** [info@golpumps.com](mailto:info@golpumps.com)

