

# DPR master

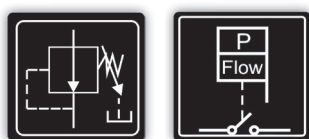
Digital Pressure Regulator

Digital pump driver for 2 pumps systems on **duty-assist** operation at constant outlet pressure.

**DPR master** is made up of 2 communicated **DPR** units for automatic control and protection of 2 electric pumps up to 2,2 kW (3 HP), multi-voltage (110-230 V) and equipped with an innovative outlet pressure reducing/regulating system. These 2 pumps will operate in **duty-assist** operation mode.

Each pump is managed and protected by a unit **DPR**, operating in cascade and with alternated starting sequence - this means that first pump to start will change in each operation cycle, the second pump will start, only, if the first pump cannot afford the flow demand.

**DPR master** includes all the same features of an standard **DPR**.



**DPR master**

**DPR master IN-OUT**



Low Voltage Directive 2014/35/EC  
Electromagnetic Compatibility 2014/30/EC  
RoHS 2011/65/EC + 2015/863/EC

## OPERATING CHARACTERISTICS

- Duty-assist operation.
- Power relays to manage 2 electric pumps up to 2,2 kW (3 HP).
- Multi-voltage power supply: 110-230 V.
- Manual regulation of the constant outlet pressure with integrated adjusting tool.
- Outlet pressure indicator with pointer.
- Digital adjustment of the start pressure.
- Digital pressure gauge (bar/psi).
- Inner flow sensor.
- Inner current sensor with instantaneous digital reading.
- Functions: **APR** (Anti-blocking periodic routine), **ART** function (Automatic Reset Test), **An-ti-flooding**, **Stand-by** mode.
- Protection against: dry-run operation, overcurrent, over-pressure, low-pressure, fast-cycling, flooding, rotor locking.
- Control panel includes: 3-digit display, flow indicator, bar/psi indicator, alarm indicator and push-buttons.
- Register of operation data and alarms.
- Reserve against leaks in the installation.
- **DPR master IN-OUT**: Connection for external input (float switch, time switch...) and for volt-free contact for alarms monitoring.
- Inlet and outlet hydraulic threads: G1", G1-1/4", NPT1", NPT1-1/4".



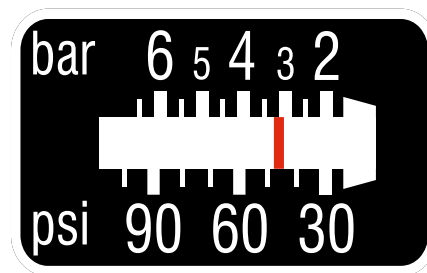
## TECHNICAL CHARACTERISTICS

	<i><b>DPR master</b></i>
Power supply	1 ~ 110 ÷ 230 Vac (50/60 Hz)
Max. current intensity	16 A; cos fi ≥ 0,6
Power	2,2 kW (3 HP)
Start pressure range	2 ÷ 6 bar / 29 ÷ 87 psi
Outlet pressure range (P <sub>out</sub> )	0,5 ÷ 5,5 bar / 7,5- 80 psi
Protection degree	IP65
Max. temperature	50 °C
Max. pressure	10 bar / 145 psi
Inlet and outlet thread	G1", G1-1/4", NPT1", NPT1-1/4"
Net weight (without cables)	2 Kg

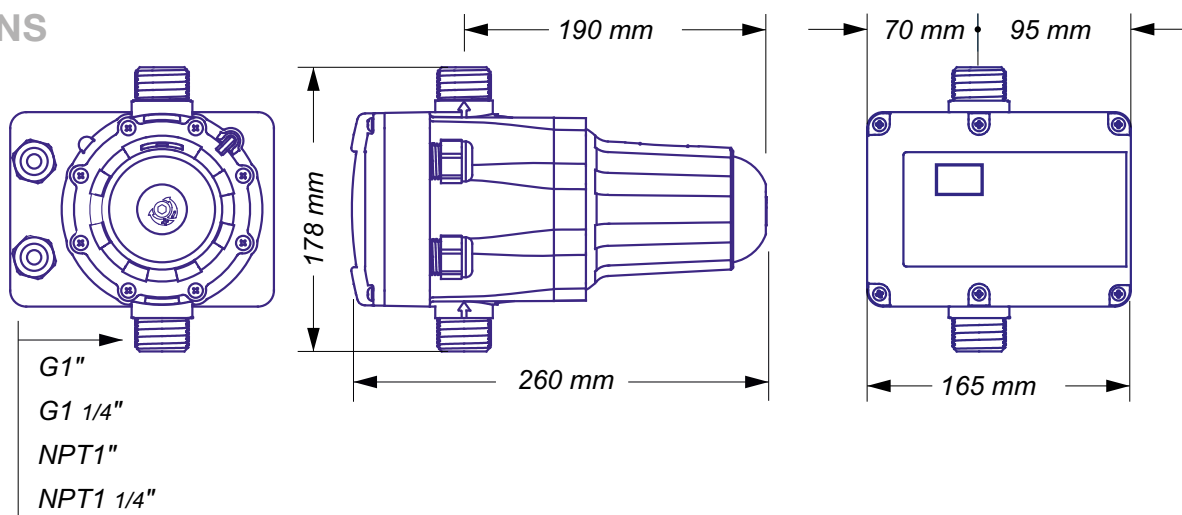
## CONTROL PANEL



## OUTLET PRESSURE INDICATOR



## DIMENSIONS





**Gol Pumps Technology Company**  
*Supply, Import, Export Water Pumps*

---

**Gol Pumps Technology**

[www.golpumps.com](http://www.golpumps.com)

**Our Address:** 6520 NW 77th CT, Miami FL 33166, USA

**Sales DPT:** +1 786 615 8984

**After Sales Service:** +1 786 452 9775

**Fax:** +1 786 615 7043

**Email:** [info@golpumps.com](mailto:info@golpumps.com)

