

DPR alt

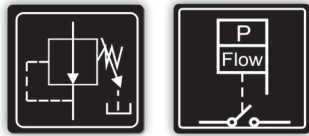
Digital Pressure Regulator

Digital pump driver for 2 pumps systems on **duty-standby** operation at **constant outlet pressure**.

DPR alt is a compact device for automatic control and protection of 2 electric pumps systems, up to 2,2 kW (3 HP), multi-voltage (110-230 V) and equipped with an innovative outlet pressure reducing/regulating system. These 2 pumps will operate in **duty-standby operation** mode.

Both pumps are managed and protected by the same **DPR** with alternated starting sequence - they never will operate simultaneously. This system guarantees the flow supply in case of failure of one of the electric pumps and also increase their durability.

DPR alt includes all the same features of an standard **DPR**.



DPR alt



Low Voltage Directive 2014/35/EC
Electromagnetic Compatibility 2014/30/EC
RoHS 2011/65/EC + 2015/863/EC

OPERATING CHARACTERISTICS

- Duty-standby operation.
- Power relays to manage 2 electric pumps up to 2,2 kW (3 HP).
- Multi-voltage power supply: 110-230 V.
- Manual regulation of the constant outlet pressure with integrated adjusting tool.
- Outlet pressure indicator with pointer.
- Digital adjustment of the start pressure.
- Digital pressure gauge (bar/psi).
- Inner flow sensor.
- Inner current sensor with instantaneous digital reading.
- Functions: **APR** (Anti-blocking periodic routine), **ART** function (Automatic Reset Test), **Anti-flooding**, **Stand-by** mode.
- Protection against: dry-run operation, overcurrent, over-pressure, low-pressure, fast-cycling, flooding, rotor locking.
- Control panel includes: 3-digit display, flow indicator, bar/psi indicator, alarm indicator and push-buttons.
- Register of operation data and alarms.
- Reserve against leaks in the installation.
- Inlet and outlet hydraulic threads: G1", G1-1/4", NPT1", NPT1-1/4".



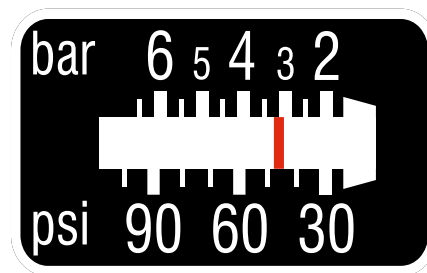
TECHNICAL CHARACTERISTICS

	<i>DPR alt</i>
Power supply	1 ~ 110 ÷ 230 Vac (50/60 Hz)
Max. current intensity	16 A; cos fi ≥ 0,6
Power	2,2 kW (3 HP)
Start pressure range	2 ÷ 6 bar / 29 ÷ 87 psi
Outlet pressure range (P _{out})	0,5 ÷ 5,5 bar / 7,5- 80 psi
Protection degree	IP65
Max. temperature	50 °C
Max. pressure	10 bar / 145 psi
Inlet and outlet thread	G1", G1-1/4", NPT1", NPT1-1/4"
Net weight (without cables)	2 Kg

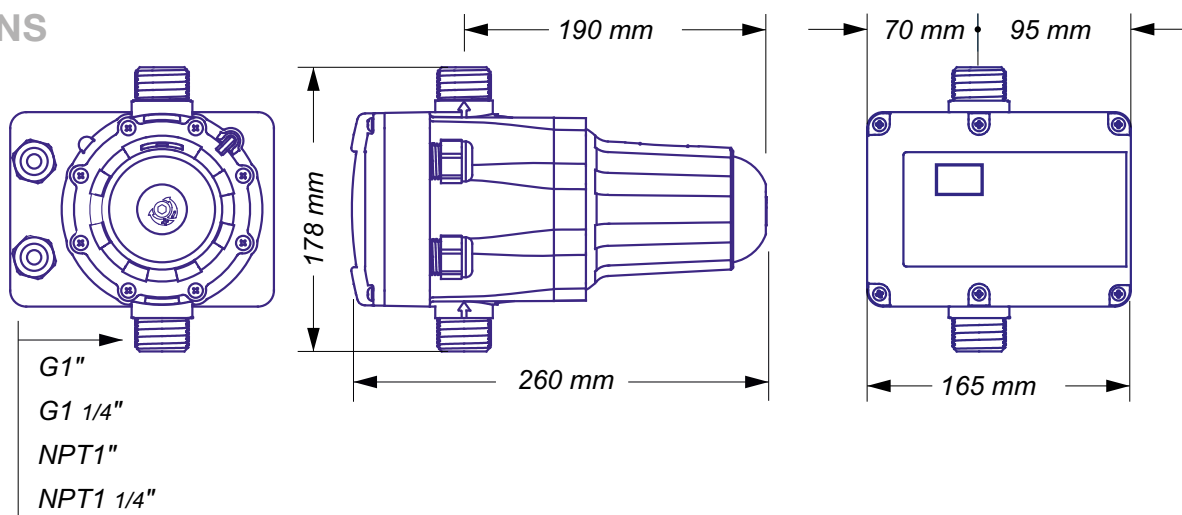
CONTROL PANEL



OUTLET PRESSURE INDICATOR



DIMENSIONS





Gol Pumps Technology Company
Supply, Import, Export Water Pumps

Gol Pumps Technology

www.golpumps.com

Our Address: 6520 NW 77th CT, Miami FL 33166, USA

Sales DPT: +1 786 615 8984

After Sales Service: +1 786 452 9775

Fax: +1 786 615 7043

Email: info@golpumps.com

